



The Copenhagen Psychosocial Questionnaire (COPSOQ) Validation and knowledge dissemination in Sweden

Hanne Berthelsen, DDS, MPH, PhD, Malmö University



Aims of the validation project

- To validate the existing Swedish translation of COPSOQ II and further develop scales specifically directed towards personally enriching aspects in human service work
- To map the psychosocial work environment, stress, and wellbeing of first-line health care workers aiming to establish reference values and to analyze the interplay between individual and group factors in relation to outcomes such as sickness absence and staff turnover

Aims of the knowledge dissemination project

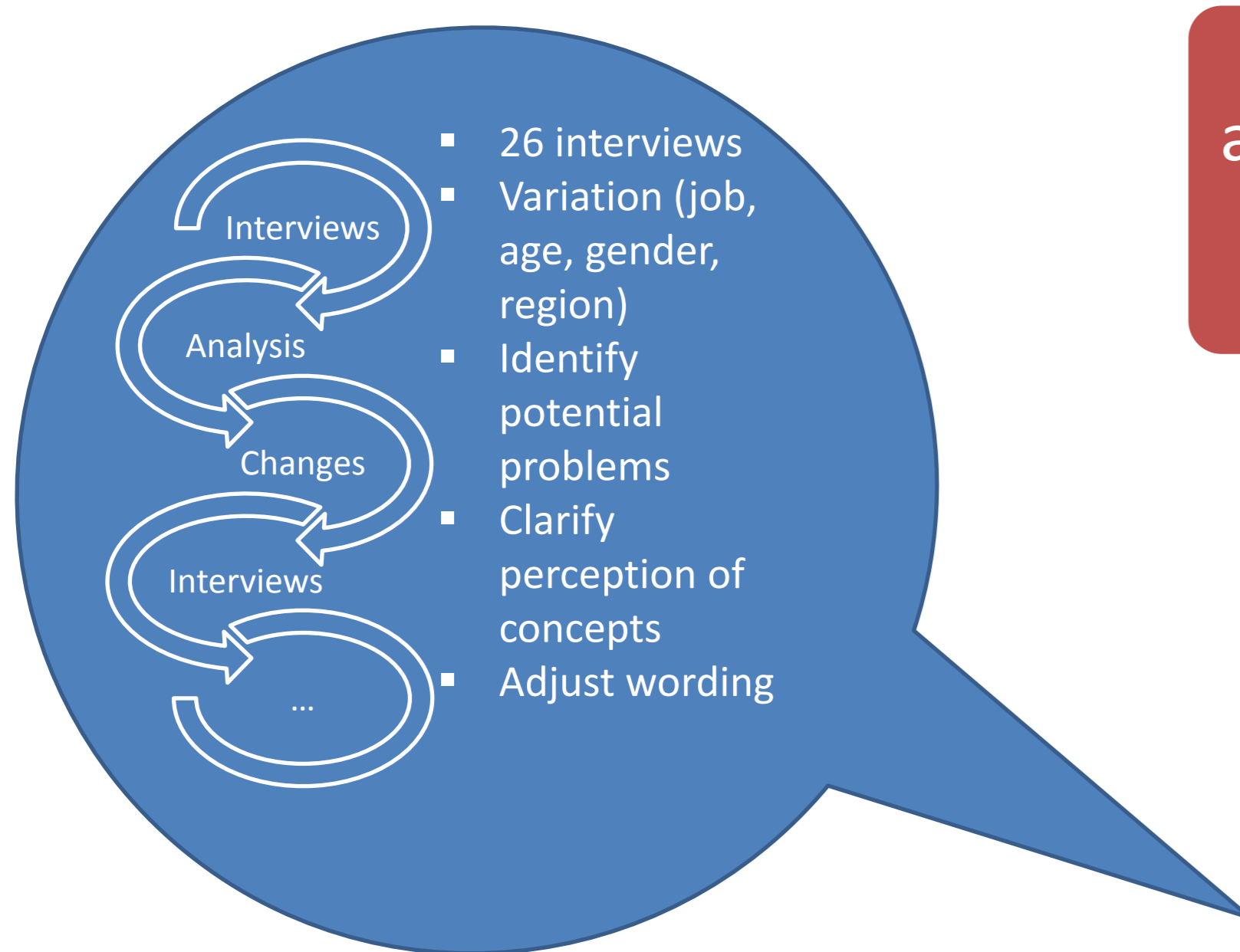
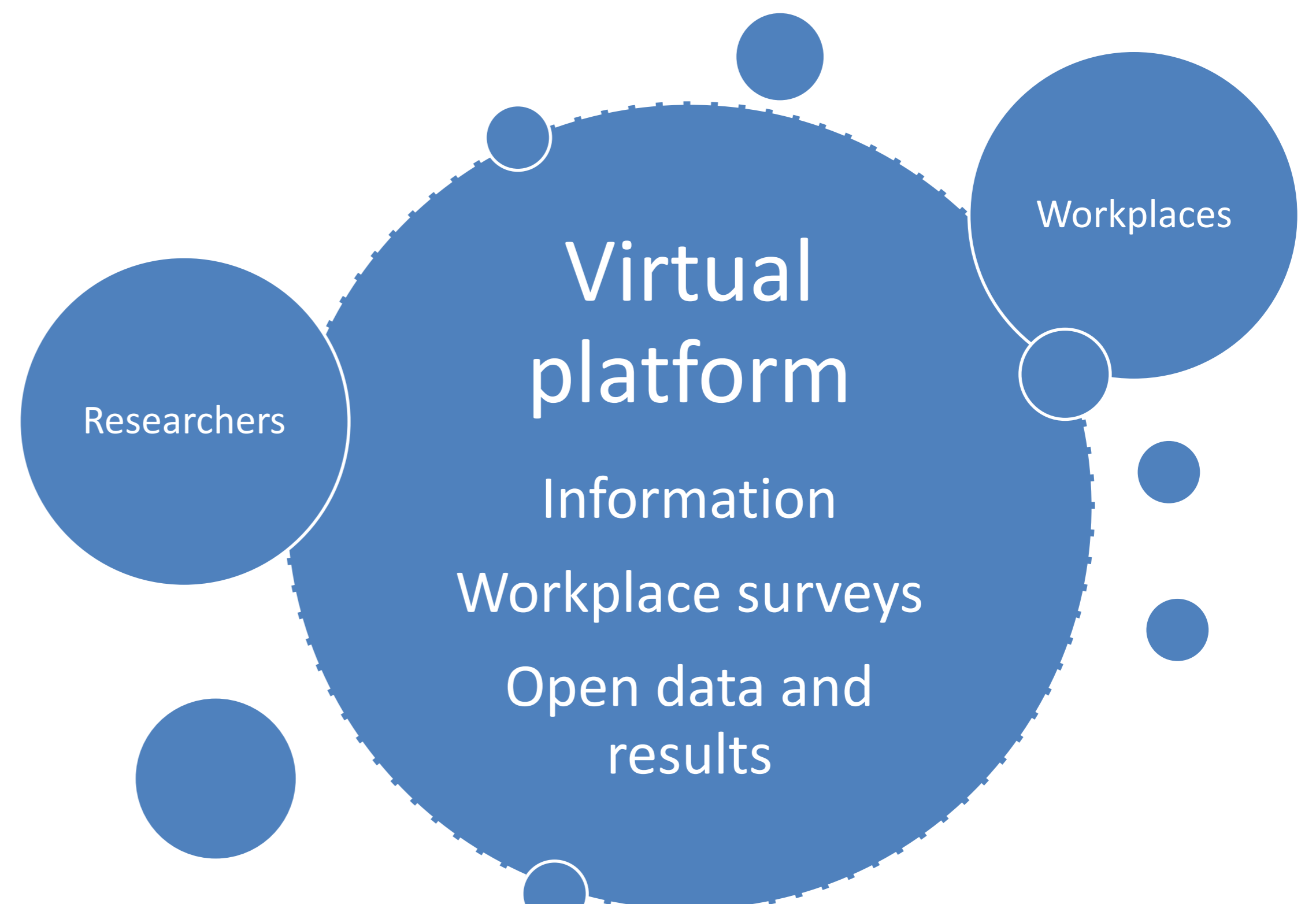
- To disseminate and facilitate the use of COPSOQ as a research-based tools in improvement of the working environment at workplaces.
- Central to the project is to build a homepage for workplaces to have easy access to information about COPSOQ, workplace assessments, interpretation of results, and planning of interventions.
- Data collected in research and at workplace surveys will be integrated in a database and showed as online interactive diagrams with open access.

COPSOQ — SWEDEN —

Copenhagen Psychosocial Questionnaire



- Generic questionnaire
- First version introduced in 1997
- Translated into several languages



Backtranslation and evaluation of Swedish translation

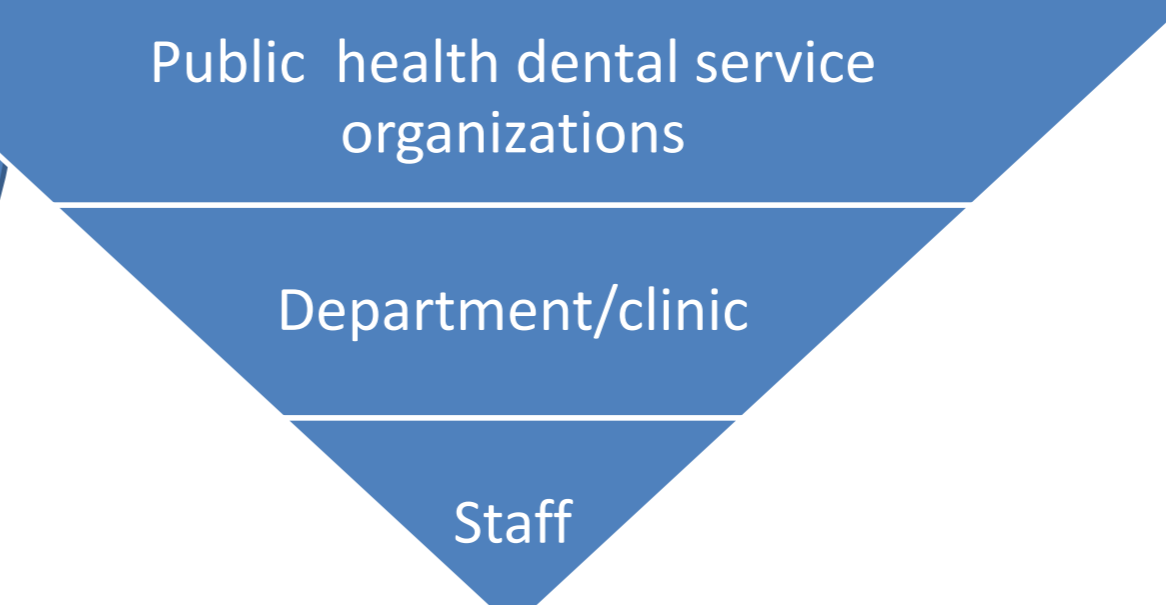
Development of additional scales

Cognitive assessment study

Cross-sectional survey

Follow-up data

- Multi level design
- COPSOQ questionnaire including additional scales



- Turnover rate
- Sickness absence
- Workplace development

Publications

- Berthelsen H, Westerlund H, Kristensen TS. COPSOQ II - en uppdatering och språklig validering av den svenska versionen av en enkät för kartläggning av den psykosociala arbetsmiljön på arbetsplatser. Stockholm: 2014
- Berthelsen H, Lönnblad A, Hakanen J, Søndergård Kristensen T, Axtelius B, Bjørner JB, Westerlund H. Cognitive interviewing used in the development and validation of Copenhagen Psychosocial Questionnaire in Sweden. Conference paper presented at the Nordic Working Life Conference 2014
- Berthelsen H, Hakanen J, Kristensen T, Lönnblad A, Westerlund H. A Qualitative Study on the Content Validity of the Social Capital Scales in the Copenhagen Psychosocial Questionnaire (COPSOQ II). Scandinavian Journal of Work and Organizational Psychology. 2016;1(1)



COPSOQ-Sweden research group
Hanne Berthelsen¹, Jari Hakanen², Tage Søndergård Kristensen³, Hugo Westerlund⁴

1) Malmö University 2) Finnish Institute of Occupational Health 3) Task-Consult 4) Stockholm University

hanne.berthelsen@mah.se
WWW.COPSOQ.SE